



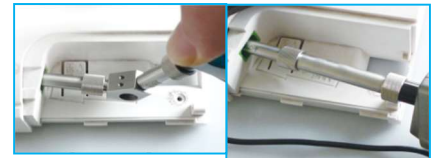
SpeedyTest2 EFW-300P WiFi/USB Probe

Product Highlight

- Auto pass/fail whole process in 1-2s to save time greatly.
- RealTime display image without any delay on the smartphone/tablet under WiFi Mode.
- >8hrs battery support for long time use.
- Inner light adjustment to observe the defects with ease.
- Unidirectional one-way focus to get end face with speed.
- Front light for darkness check.
- 50+ tips support, regular APC tips SC-APC-F, FC-APC-F, 2.5APC-M, 1.25APC-M, Lemo male/female two-in-one all support.
- Multiple core tips MT-P, MPO-PC-F, MPO-APC-F all support.
- Angled and long reach tips for hard-to-access places.
- Multiple terminals support with PC/Laptop/tablet/smartphone/OTDR with USB or WIFI channel
- Support Android/iOS/Windows System

Overview

FiberEye2 EFW-300P WiFi/USB fiber optic inspection probe is the automated WiFi/USB dual-use portable digital fiber inspector scope. It can quickly check various patch cords and transceivers, display the fiber end face in PC/laptop/OTDR/smartphone, etc., digital devices with the USB cable or WiFi connection. Under WIFI mode, the probe can do the auto center and auto PASS/FAIL analysis with the end face. The whole process takes 2-5s to save time greatly. All test results, fiber images can be saved and shared on PC and mobile devices in jpg format for file records. It's super light and handy to take anywhere anytime for field tests, operation inspections, and lab research.



access test



Connect smart phone/tablet via Wifi



Connect PC/OTDR via USB

Specifications

SpeedyTest2 EFW-300P Probe			
Magnification	400X/200X	Connector	Micro USB
Definition	<1μm	Connectivity	Wi-Fi802.11/USB 1.0/2.0
Light source	Blue LED	Frequency band	2.4GHz
View of field	X: 0.3487 Y: 0.2632 mm	OS compatibility	Android 4.4 or above IOS8.1 or above
Focus wheel	Unidirectional single-way	Voltage	5V
Focus speed	1-3s	Power support	3400mAh Li-ion
Alignment	>98%	Working time	≥ 8h
Capture button	Available	Recharge time	≤ 4h
Quick switch	WiFi / USB	Weight/Dimension	0.55kg / 19x5x3cm

Configuration

Items	Description	Quantity
EFW-300P	To test the fiber end face on patch cords / connectors in patch panels, etc.	1pcs
Standard Tips	SC-PC-F, FC-PC-F, LC-PC-F, 2.5PC-M	1 pcs/type
USB cable	USB to Micro USB cable(two end) for charging and data transfer	1pcs
Soft case	carry the probe and accessories	1pcs
Application	FiberEye2 on Android & iOS for end face check	
USB AC adapter(optional)	5V 1A charger	
USB adapter(optional)	USB-C to USB-A adapter, applicable for USB2.0 and USB3.1 OTG smart devices	
Arm strap(optional)	Outdoor arm strap to carry Mobile Phone	

Note: Package and color subject to changes without notice.