

Good things come in small packages

AQ1000
Optical Time Domain Reflectometer

Precision Making

Bulletin AQ1000-01EN



Empower field technicians to make fast and precise measurements

At-a-glance

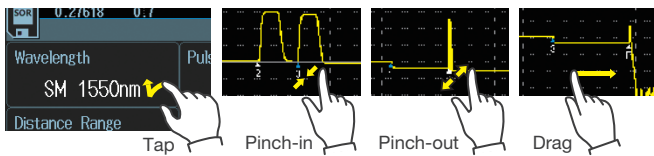
The AQ1000 satisfies test and measurement needs in analyzing access optical networks.

- Wavelengths: 1310 / 1550 nm
- Dynamic ranges: 32 / 30 dB
- Size: 185 mm (W) × 116 mm (H) × 56 mm (D)
- Weight: 660 g

Multi-touch touchscreen

Intuitive and responsive

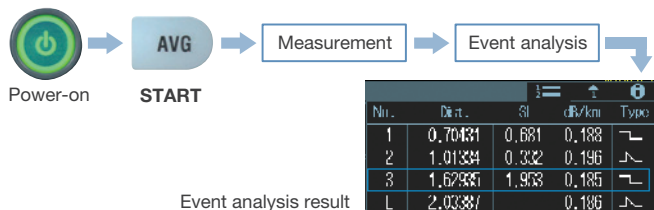
Tap, swipe, pinch or press. the high resolution, responsive 5.0-inch multi-touch capacitive touchscreen and hard-key buttons make OTDR operations simple and intuitive.



One-button measurement

Full-Auto

Simply pressing one single button, the AQ1000 initiates an OTDR measurement, detects and comprehensively characterizes network events with PASS/FAIL judgment based on user-defined thresholds. The measurement data can be saved automatically if desired.



Real-Time

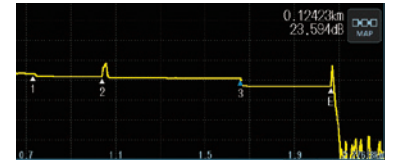
Simple and fast way to observe how the network connection looks like and make a Pass/Fail judgment of the network connection. The markers enables distance and loss measurements.



OTDR view modes

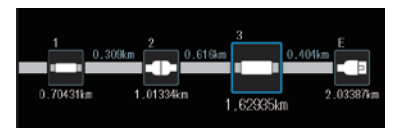
Trace view

Traditional view with OTDR waveforms and event markers.



Map view

Simple, icon-based map view for easy interpretation of network events.



Long battery operation time

Over 10 hours!

No worrying about running out of battery power during your daily work. The AQ1000's high capacity Li-Ion battery will last for 10 hours under the Telcordia standard conditions.

Quick boot-up

Under 10 seconds!

From completely OFF to measurement ready in under 10 seconds!

Built-in PC and LS, and VLS

Power checker (PC)

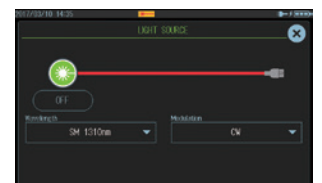
Measures and displays optical power of incoming light for testing network performance.



Power checker (PC)

Light source (LS)

Outputs a stable, continuous wave/modulated light for measuring end-to-end attenuation accurately when paired with an optical power sensor.

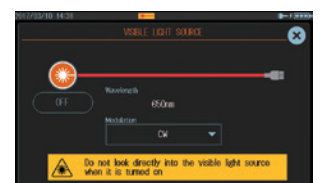


Light source (LS)

Visible light source (VLS)

Outputs red light for checking continuity of launch fibers or short fiber trunks. Breaks and bending in fiber can be identified visually.

(VLS option is required.)



Visible light source (VLS)

Data handling features

Direct data saving

Simply pressing “Direct save” icon, measured data can be saved in SOR or PDF format according to users’ prior selection.



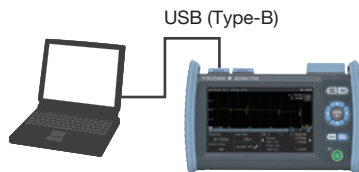
PDF reporting

Built-in post-processing software for generating OTDR reports in PDF format. Flexible configuration of report template to meet users’ report requirements.



Data Transfer

Data files or PDF report files that are stored in the AQ1000 can easily be transferred to a PC through a USB connection.



Wireless LAN

The AQ1000 is capable of data transfer and remote control in cooperation with wireless LAN capable devices.



Wireless LAN

Wireless data transfer

The AQ1000’s data files can be transferred to a smartphone or tablet using the OTDR data transporter, or to PC using the OTDR Remote Controller software.

Remote control

The AQ1000 can be controlled remotely by a smartphone or tablet using a web browser and by a PC using a web browser or the OTDR remote controller.

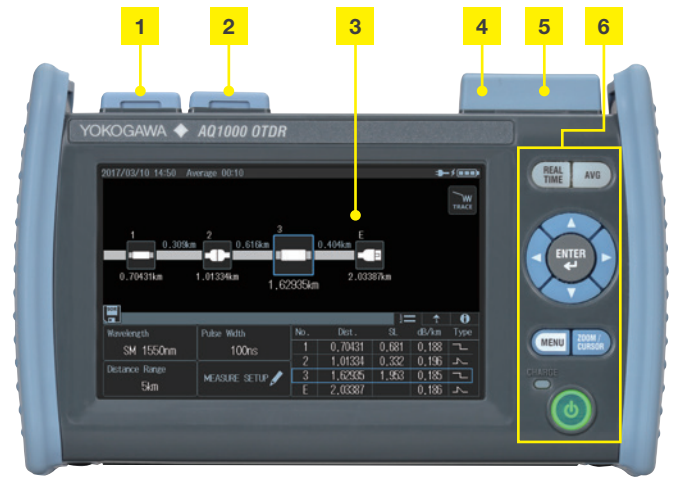
Note.

/WLN option is required. Please consult with our sales representatives for availability in your country.

The OTDR Data Transporter and the OTDR Remote Controller are a free application software.

Interfaces

- 1 USB port (Type micro B)
- 2 USB port (Type A)
- 3 5.0-inch color LCD with capacitive touch-screen
- 4 VLS port (option)
- 5 OTDR port
- 6 Keys



USB power feeding

USB port is used for charging the battery of AQ1000. No need to carry a bulky AC adapter anymore.

Note.

A USB power adapter is not included. Please consult with our sales representatives for Yokogawa approved USB power adapters.



Multi language

Selection of display languages to assist users in operating the AQ1000 in their native language.

Measurement functions

- Distance measurement
- Loss measurement
- Return loss measurement (Total/Section)
- Auto event search
- Pass/Fail judgment

